

aera™

2025 Fragrance Catalogue



Updated 1 January 2025

Ambient Scenting

Inspired scents for any mood, and every space



Agraria Balsam



Amalfi Coast



Agraria Bitter Orange



Bamboo Jardin



Beach House



Citrus



Curiosity



Himalayan Rose



Hawaii



Indigo



Lavender



Lemon Verbana



Linen



Log Fire



Moondance



Palo Santo



Pacific Surf



Paris



Poetry



Sandalwood



Tropical Sunrise



Vanilla



Vibrance



White Tea



Zephyr

Wellbeing MoodBoost

Inspired scents for any mood, and every space



Sun's Out



Soft Pants



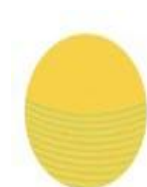
Spa La La



Pillow Plans

Hygiene

Bring brightness and comfort to any space with fresh clean fragrances



Home Hygiene²
Citrus and Sage



Home Hygiene²
Lavender and Bergamot



Home Hygiene²
Linen and Lemon



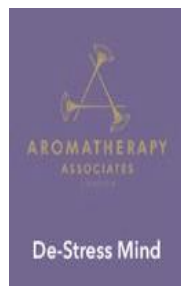
Home Hygiene²
Mint and Eucalyptus



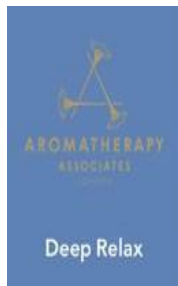
Geranium

Aromatherapy

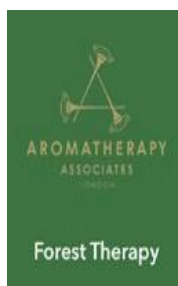
Award-winning essential oil blends that will soothe your soul, and open your mind – brought to you by Aromatherapy Associates London



De-Stress Mind



Deep Relax



Forest Therapy



Revive



Support Breathe



Bliss



Optimism



Anti-Odor

Say goodbye to unpleasant odors,
and say hello to freshness



aera™

Christmas Time



Ambient Scenting

Inspired scents for any mood, and every space

Agraria Balsam

Ground yourself in the here and now!

Soothing and natural, this earthy fragrance evokes the protective tranquility of the giant cedars in the California Redwood Forest. Deep woody aromas mingle with comforting notes of sweet balsam, while hints of French sage and freesia add luminosity.



Moods		Calm, Relaxed
Scent Type		Woody
Essential oils		Sweet Balsam, Cedar & Redwood
Strength Level		Strong

Agraria Balsam

TOP NOTES



CEDARWOOD



CLARY SAGE



BALSAM

MIDDLE NOTES



FREESIA

BOTTOM NOTES

Contains Essential Oils:

- Sweet Balsam
- Freesia

Contains Firmenich
Deep Roots Essential
Oils:

- Cedarwood
- Clary Sage

Amalfi Coast



Hop on a small red Vespa and zoom along Amalfi Drive. Citrus sun is everywhere and the Mediterranean Sea sparkles magnificently. Stop at a lemon grove in Sorrento, take a tour of the green hills, enjoy a taste of limoncello, and feel every cell smile. Ah – La dolce vita!

Moods | Escape

Scent Type | Citrus

Essential oils | Blood Orange, Sunshine

Strength Level | Between subtle and strong

Amalfi Coast

TOP NOTES



LEMON



ORANGE

Contains Essential Oils:

- Lemon
- Orange

MIDDLE NOTES



GREEN

BOTTOM NOTES

Agraria Bitter Orange



Classic and welcoming, Agraria's signature fragrance is a warm, homely embrace. Fresh zest of bitter orange, spicy cloves and a hint of woody cypress is the perfect blend of simplicity and comfort.

Moods | Refreshed

Scent Type | Citrus

Essential oils | Bitter Orange, Cloves & Cypress

Strength Level | Subtle

aera™

Agraria Bitter Orange

TOP NOTES



BITTER ORANGE



CLOVES

MIDDLE NOTES



CYPRES

BOTTOM NOTES

Contains Essential Oils:

- Cloves
- Bitter Orange
- Cypres

Bamboo Jardin

Open a window to a sunshiny garden burgeoning with lush spring foliage. A fresh, nature-inspired fragrance with cooling effervescent notes of basil and eucalyptus. Get happy :)



aera™

 **SECAIRDESIGN**

“In exploring the forest, I find great peace and energy from the plants and trees. It is rejuvenating to “bathe” in the forest earthiness. Feeling connected to the vibrant natural energy of the woods, I am at one with the freshness and greenness of nature.”

Ashley Balavoine
Perfumer

Moods		Happy, Energizing
Collection		Core
Olfactive Family		Green Citrus Aromatic
Detection Level		3.6
Odor Neutralizing		DeodEclyx R Pat, DeodAcil
SKU		9266

Bamboo Jardin

TOP NOTES



MANDARIN



GARDEN MINT STT



BASIL EO

MIDDLE NOTES



GREEN TEA



ROSEMARY EO



FIR BALSAM ABS

BOTTOM NOTES



PINE



CEDARWOOD



GUAIAAC WOOD



MOSS



Contains Essential Oils:

- Rosemary
- Eucalyptus
- Pine
- Lime
- Nutmeg
- Guaiaac Wood
- Spearmint
- Basil

Contains Firmenich Deep Roots Essential Oils:

- Cedarwood
- Lemon

Beach House

Escape to the beach. Ocean breezes drift in through open windows. Soft florals mingle with the sea air. Bliss.



“Beach House was created for all who long to enjoy a summer escape surrounded by fresh ocean breezes and bright sunshine. A beautiful dream of summer.”

Gil Clavien
Principal Perfumer

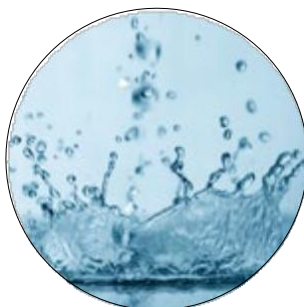
Moods		Escape, Refreshing
Collection		Core
Olfactive Family		Floral Aldehydic Citrus
Detection Level		3.8
Odor Neutralizing		DeodEclyx R
SKU		9260

Beach House

TOP NOTES



AIRY



WATERY



MARINE



Contains
Essential Oils*:

- Lemon
- Clove Leaf
- Australian Sandalwood

**Not from Naturals
Together*

Contains Firmenich
Deep Roots Essential
Oils:

- Lemon
- Sandalwood

MIDDLE NOTES



GARDENIA



TIARE



LILY OF THE VALLEY



FREESIA

BOTTOM NOTES



BLONDE WOODS



MUSK

Citrus

The fresh zest of ripe Italian lemons and Persian limes harmoniously blend with cooling clary sage and a touch of verbena to energize your home with sparkling freshness.



aera™



SECAIRDESIGN

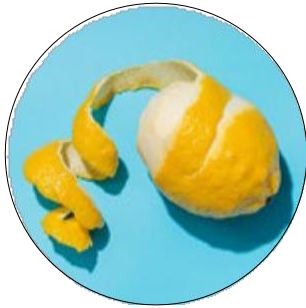
“The Aera diffuser is rare in its ability to capture and respect the fresh zest of ripe citrus fruit. In this scent, real Italian and Florida lemons join Persian limes to dance in harmony with elegant sage and a touch of verbena. A shot of good mood if you wish”

Master Perfumer
Christophe Laudamiel

Moods		Blissful, Uplifting
Collection		Core
Olfactive Family		Citrus Lemon Floral
Detection Level		4.0
Odor Neutralizing		DeodEclyx R
SKU		7101

Citrus

TOP NOTES



LEMON ZEST



LIME

MIDDLE NOTES



GERANIUM



VERBENA

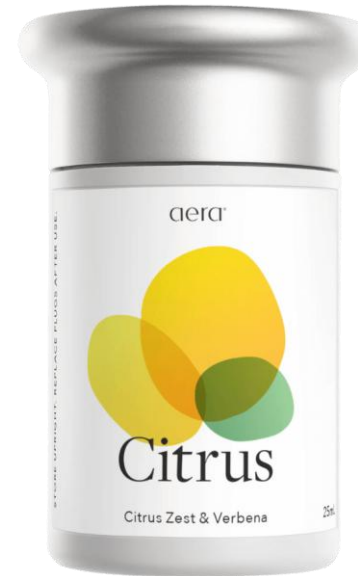
BOTTOM NOTES



CEDAR



CLARY SAGE



Contains Essential Oils:

- Geranium
- Clary Sage
- Lime
- Cedarwood Virginia
- Lemon

Contains Firmenich
Deep Roots Essential
Oils:

- Cedarwood Virginia
- Citronella Ceylon
- Geranium Egypt
- Clary Sage Pays

Curiosity

Evokes carefree summer days through notes of citrus, crisp pear, and luscious florals. At once fresh and intoxicating.



aera™



SECAIRDESIGN

“Inspired by a springtime stroll through the magnolia blooms of Central park, this fragrance features bright, alluring notes of pear and red berries. A dash of enticing pink pepper flirts with orange and lemon essential oils in this playful blend.”

Gil Clavien

Principal Perfumer

Moods	Playful, Carefree
Collection	Core
Olfactive Family	Floral, Oriental
Detection Level	3.5
Odor Neutralizing	DeodEclyx R
SKU	AF01010116001

Curiosity



 **SECAIRDESIGN**

TOP NOTES



BERGAMOT



LEMON

Contains Essential Oils:

- Orange Sweet
- Pine
- Spearmint
- Red berries

MIDDLE NOTES



MAGNOLIA
NATUREPRINT®



HEDIONE



LIGHT JASMINE



LOTUS



PINK PEPPER



LEAFY GREEN

BOTTOM NOTES



CEDARWOOD



WARM WOOD

Contains Firmenich Deep Roots
Essential Oils:

- Cedarwood Virginia
- Lemon
- Copaiba
- Clary Sage

aera™

Hawaii



aera™

 **SECAIRDESIGN**

Soak up the Aloha spirit in Hawai'i, where lush, fruity cocktails are bottomless, and the palm trees are always swaying. Explore botanical gardens bursting with hibiscus, passionflower, and the call of the 'Iwi bird. Live your best island life starting now.

Moods | Escape

Scent Type | Fruity

Essential oils | Tropical Fruits & Sugared Limes

Strength Level | Between subtle and strong

Hawaii

TOP NOTES



TROPICAL FRUIT



LIME

Contains Essential Oils:

- Tropical Fruit
- Lime

MIDDLE NOTES

BOTTOM NOTES

Himalayan Rose

The queen of the florals, voluptuous yet delicate. Rose opulence flirts with peonies and linden blossoms. Fresh and sensuous.



“I was inspired by my early morning summer strolls in my rose garden. A natural delicate scent of the petals imbued with dew drops for an uplifting and bright impression.”

Violet Zar
Perfumer

Moods		Escape, Refreshing
Collection		Core
Olfactive Family		Floral, Rose
Detection Level		3.7
Odor Neutralizing		No
SKU		AF01010319001

Himalayan Rose



TOP NOTES



ROSEMARY



PEAR

MIDDLE NOTES



ROSE



WATER LILY



GREEN LEAVES

BOTTOM NOTES



AMBER



BLONDE WOODS

Contains Essential Oils:

- Orange
- Pine

Indigo

A cool sea spray on a wooded shore of cedar and sandalwood. Enhanced by the crisp and sensuous blend of citrus, cloves, and magnolia.



“Indigo calls to mind the contrast between woody warmth and pure air. Inspired by the forest, the fragrance creates a feeling of comfort that soothes, while also calling to mind the freshness of a blue, crisp sky that revitalizes.”

Gil Clavien
Principal Perfumer

Moods | Cozy, Escape

Collection | Core

Olfactive Family | Woody Citrus

Detection Level | 2.7

Odor Neutralizing | DeodEclyx R

SKU | 9083

Indigo

TOP NOTES



CITRUS



APPLE



GREEN

MIDDLE NOTES



JASMINE



WATERLILY



MAGNOLIA

BOTTOM NOTES



GUAIAAC WOOD



PATCHOULI



SANDALWOOD



CEDARWOOD



Contains Essential Oils:

- Orange sweet
- Pine
- Nutmeg
- Guaiac Wood

Contains Firmenich
Deep Roots Essential
Oils:

- Lemon Peel
- Cedarwood
- Copaiba
- Patchouli
- Mandarin
- Clary Sage

Lavender

Summertime in Provence. Soothing French lavender illuminated by fresh mandarin and bergamot. Calming and meditative.



“We all carry powerful memories associated with lavender, which is why this scent seems to caress and reassure us all so deeply. Alongside this softness, a lavender sachet that you can almost sense crunching beneath your fingers.”

Master Perfumer
Christophe Laudamiel

Moods | Relaxing, Blissful

Collection | Core

Olfactive Family | Fresh Aromatic

Detection Level | 3

Odor Neutralizing | DeodEclx R

SKU | 7001

Lavender

TOP NOTES



CITRUS



BERGAMOT



MINTY

MIDDLE NOTES



LAVENDER



LAVANDIN

BOTTOM NOTES



WOODS



COUMARIN



Contains Essential Oils:

- Penny Royal
- Clove Bud
- Mentha Arvensis
- Eucalyptus

Contains Firmenich
Deep Roots Essential
Oils:

- Lavandin
- Lavender
- Patchouli
- Clary Sage Pays

Lemon Verbana



Vibrant and cheerful, this fresh fragrance sparkles and enhances the brightness of natural light to create a sparkling oasis. Refreshingly lemon-scented verbena leaves are enriched with fresh Caribbean lime, rose and jasmine. Wonderfully lively.

Moods | Refreshed

Scent Type | Citrus

Essential oils | Verbena, Lemon & Lime

Strength Level | Between subtle and strong

Lemon Verbana

TOP NOTES



LEMON



VERBANA

MIDDLE NOTES



ROSE



JASMINE

BOTTOM NOTES

Contains Essential Oils:

- Lemon
- Verbana
- Rose

Linen

Clean laundry drying on the line. Crisp air, bright citruses and juniper berries frolic with delicate florals. Lively and Refreshing.



aera™

 **SECAIRDESIGN**

“I mixed in bright sunshine and sweet spring grasses to truly capture the feeling of hanging your laundry outside to dry.”

Sabine de Tscharnier
Perfumer

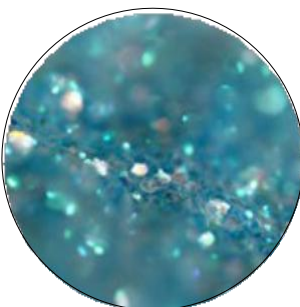
Moods	Refreshing, Familiar
Collection	Core
Olfactive Family	Floral Aldehydic Citrus
Detection Level	4
Odor Neutralizing	No
SKU	AF01010319002

Linen

TOP NOTES



ORANGE



ALDEHYDES



LEMON

MIDDLE NOTES



LOTUS FLOWER



GREEN LEAVES



SAGE

BOTTOM NOTES



CEDARWOOD



GUAIAC WOOD



BLONDE WOODS



Contains Naturals
Together Essential Oils:

- Cedarwood
- Elemi

Contains Essential Oils:

- Orange
- Lime
- Pine
- Lemon
- Guaiacwood

Contains Firmenich
Deep Roots Essential
Oils:

- Cedarwood
- Elemi

Log Fire (Feu de Bois)



A fire in the hearth. A windswept beach. The warmth and comfort of smokey embers and guaiac wood. Cozy and inspiring.



“I love that sense of coziness while a storm brews outside. This fragrance combines the smell of wood burning in the fireplace with that feeling of electricity in the air before a storm.”

Ashley Balavoine
Perfumer

Moods | Cozy, Escape

Collection | Core

Olfactive Family | Woody, Amber, Smoky

Detection Level | 2.8

Odor Neutralizing | No

SKU | AF01010319003

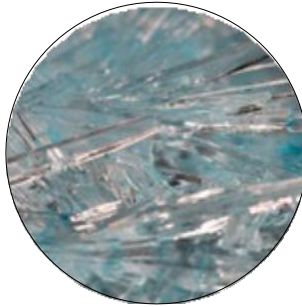
aera™

Log Fire (Feu de Bois)

TOP NOTES



SEA SALT



CRISP ALDEHYDES



OCEAN AIR

MIDDLE NOTES



BONFIRE



DUNE GRASS

BOTTOM NOTES



DRIFT WOOD



WARM SAND



GUAIAC WOOD



Contains Firmenich
Deep Roots Essential
Oil:

- Cedarwood Virginia

Moondance

A rich, luscious scent that conjures warmth and elegance. Velvety vanilla notes and enticing amber dance and mingle with the brightness of green notes, iris and bergamot. Pure elegance.



aera™



SECAIRDESIGN

“I wanted to create a beckoning fragrance that is both fresh and warm, like a playful dance between the shadows and the light.”

Sabine de Tscharnier
Principal Perfumer

Moods	Sensuous, Enchanting
Collection	Core
Olfactive Family	Spicy Oriental Amber
Detection Level	3.5
Odor Neutralizing	DeodEclyx R
SKU	AF01010116002

Moondance

TOP NOTES



BERGAMOT



MELON



IVY



GREEN

MIDDLE NOTES



IRIS



RED HONEYSUCKLE



NUTMEG



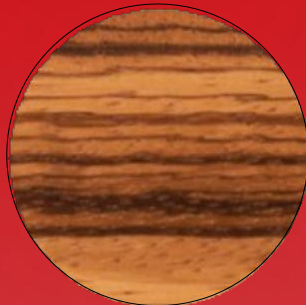
Contains Essential Oils:

- Orange Sweet
- Bergamot
- Nutmeg
- Guaiacwood
- Clove Leaf

Contains Firmenich
Deep Roots Essential
Oil:

- Patchouli

BOTTOM NOTES



EXOTIC WOODS



GUAIAC WOOD



AMBERGRIS



VANILLA

Pacific Surf



The power of the ocean lifts you up and induces fearless energy with an invigorating splash of sea spray and citrus combined with refreshing aromatic essences of cypress and eucalyptus. Vast and deep as the ocean.

Moods | Energizing, Refreshed

Scent Type | Fresh

Essential oils | Marine & Cedarwood

Strength Level | Between subtle en strong

Pacific Surf

TOP NOTES



CYPRES



EUCALYPTUS



CEDARWOOD

MIDDLE NOTES



MARINE

BOTTOM NOTES

Contains Essential Oils:

- Cypress
- Eucalyptus
- Cedarwood

Palo Santo

A peaceful aura manifests through the beautiful aroma of unburned palo santo wood. Hints of blissful citrus and calming juniper add intrigue. Purifying and cleansing.



“The ritual of burning Palo Santo or ‘Holy Wood’ is known for its energetic purification and healing attributes, much like sage. This fragrance was crafted to capture as much of that energy as mother nature would allow.”

Raymond Matts
Perfumer

Moods	Sensuous, Cozy
Collection	Core
Olfactive Family	Woody, Aromatic, Citrus
Detection Level	3.4
Odor Neutralizing	DeodEclyx R Pat, DeodAcil
SKU	9275

Palo Santo

TOP NOTES



BERGAMOT NP



LEMON

MIDDLE NOTES



CORIANDER



JUNIPER BERRY



MINT

BOTTOM NOTES



CEDARWOOD



SANDALWOOD



PALO SANTO



Contains Essential Oil:

- Cedar Leaf
- Guaiacwood
- Cade

Contains Firmenich
Deep Roots Essential
Oil:

- Cedarwood
- Coriander Seed
- Peru Balsam
- Sandalwood

Paris



Bonjour, Paris! Enjoy the City of Lights and love while sipping a Mimosa cocktail at an open-air café. A joyful, carefree Parisian spirit is captured by lush jasmine flowers and mimosa flowers from the South of France. Sparkling orange and cheerful champagne notes combined with warmth of macarons and soft musk will romanticize you. C'est magnifique!

aera™

Moods		Escape
Scent Type		Floral
Essential oils		Champagne & Macarons
Strength Level		Subtle

Poetry

As smooth and sensual as suede. Woody notes of eucalyptus, vetiver, and guaiac awaken an air of mystery.



aera™

 **SECAIRDESIGN**

“Inspired by the smell of ink on parchment, this Poetry fragrance is simple yet unique. Beautiful calligraphy swirls across the page on notes of precious woods and alluring incense. The mysterious world of the poet beckons through exotic rich cedarwood and saffron. Patchouli adds intrigue as the quill continues to move across the paper.”

Sabine de Tscharnier
Principal Perfumer

Moods | Elegant, Mellow

Collection | Core

Olfactive Family | Mossy Woody

Detection Level | 2.8

Odor Neutralizing | DeodEclyx R

SKU | AF01010116004

Poetry



Contains Essential Oils:

- Cypress
- Lemon
- Guaiac wood
- Eucalyptus
- Patchouli
- Elemi
- Clove Leaf
- Olibanum extract

TOP NOTES



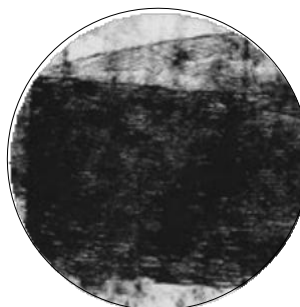
LEMON



CYPRESS



EUCALYPTUS



BLACK INK ACCORD

MIDDLE NOTES



SAFFRON



GERANIUM



GUAIAAC WOOD



PURE ELEMI ESSENCE



Contains Firmenich
Deep Roots Essential
Oils:

- Patchouli
- Elemi
- Chinese Cedar

BOTTOM NOTES



FIR BALSAM



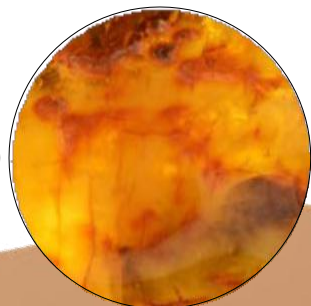
SANDALWOOD



CLEAN PATCHOULI



CHINESE CEDARWOOD



AMBER

aera™

Sandalwood

A cabin in the woods. Sensuous sandalwood, mysterious balsam and exotic oud touched with lime and bitter orange. Inspiring calm.



“I imagine a scent that would wrap you in a cocoon of freshness and diffuse like a breeze of mysterious sensuality. Sandalwood is the quint-essential sensual ingredient of this fragrance. The perfect companion of the fresh citrus. Rich and voluptuous, a soothing, purifying scent.” Master Perfumer Christophe Laudamiel

aera™

Moods		Tranquility, Calming
Collection		Core
Olfactive Family		Woody
Detection Level		4.2
Odor Neutralizing		DeodEclyx R
SKU		9179

Sandalwood

TOP NOTES



BERGAMOT



LIME



BITTER ORANGE



CYPRESS



JUNIPER



MIDDLE NOTES



CLARY SAGE



CEDARWOOD



BLACK PEPPER

Contains Firmenich
Deep Roots Essential
Oils:

- Cedar
- Balsam
- Elemi
- Clary Sage

Contains Essential
Oils:

- Bitter Orange Peel
- Lemon
- Cedarwood
- Lime
- Sweet Orange
- Cypress
- Pine
- Black Pepper
- Peru Balsam
- Clary Sage

BOTTOM NOTES



CEDARWOOD



SANDALWOOD



LOUD NP



PERU BALSAM

Vibrance

Plunge into an intoxicating tropical paradise of gardenia, ylang-ylang, and tuberose. Balance yourself with notes of pink grapefruit, violet leaf, and amber.



SECAIRDESIGN

“I wanted to create a fragrance that would capture the scent of a flower opening in the rainforest during the early hours of the morning. Dewy gardenia blooms in the crisp air with hints of sparkling grapefruit. Lush tropical greenery sways in the background and soft amber notes provide depth in the quiet.”

Sabine de Tscharnier
Principal Perfumer



aera™

Moods | Vibrant, Escape

Collection | Core

Olfactive Family | Green Floral

Detection Level | 4.3

Odor Neutralizing | DeodEclyx R, R Pat

SKU | AF01010116005

Tropical Sunrise

Tropical fruits splash into juicy pink grapefruit and fresh rhubarb for a bright, joyful fragrance. Live life colorfully.



aera™

 **SECAIRDESIGN**

“I was inspired by the different stages of rhubarb; how fresh and crisp it is raw, and how sweet and delicious it turns when cooked. All of the facets of the plant are captured in this complex fragrance to create a truly natural smelling fruity aroma.”

XXX

Perfumer

Moods		Happy, Uplifting
Collection		Core
Olfactive Family		Fruity Citrus Floral
Detection Level		4.2
Odor Neutralizing		DeodEclyx R Pat, DeodAcil
SKU		9270

Tropical Sunrise

TOP NOTES



MANDARIN



GRAPEFRUIT PINK



BERGAMOT



ORANGE EO

MIDDLE NOTES



FRANGIPANI



RHUBARB



MANGO

BOTTOM NOTES



BLONDE WOODS



MUSK



Contains
Essential Oils:

- Orange

Vanilla

Madagascar vanilla swirled with creamy tonka and oaked bourbon. Enveloped in comfort.



“A vanilla beans passes through twenty-five pairs of hands from the tropical vine to the perfuming table, so complex is the maturing process, yet so gorgeous the results. For this fragrance, I aimed to introduce you to the vanilla orchid, the only orchid to be extracted in perfumery, in a sustainable fashion, as if the vanilla pods were dancing in front of you.”

Master Perfumer
Christophe Laudamiel

Moods | Friendly, Feel-good

Collection | Core

Olfactive Family | Gourmand, Vanilla

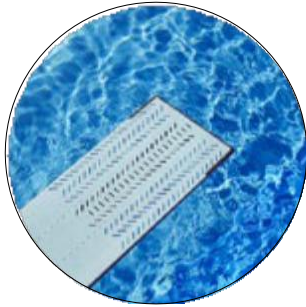
Detection Level | 3.3

Odor Neutralizing | No

SKU | 7003

Vanilla

TOP NOTES



COOLING AROMATIC

MIDDLE NOTES



LILAC



HYACINTH

BOTTOM NOTES



VANILLA



Contains Essential Oils:

- (Vanilla Planifolia Extract - 0.01%-0.05%)

Contains Firmenich Deep Roots Essential Oils:

- Madagascar Vanilla

Vibrance

Plunge into an intoxicating tropical paradise of gardenia, ylang-ylang, and tuberose. Balance yourself with notes of pink grapefruit, violet leaf, and amber.



aera™

 **SECAIRDESIGN**

“I wanted to create a fragrance that would capture the scent of a flower opening in the rainforest during the early hours of the morning. Dewy gardenia blooms in the crisp air with hints of sparkling grapefruit. Lush tropical greenery sways in the background and soft amber notes provide depth in the quiet.”

Sabine de Tscharnier
Principal Perfumer

Moods | Vibrant, Escape

Collection | Core

Olfactive Family | Green Floral

Detection Level | 4.3

Odor Neutralizing | DeodEclyx R, R Pat

SKU | AF01010116005

Vibrance

TOP NOTES



GRAPEFRUIT



LEMON



HYACINTH



VIOLET LEAVES

MIDDLE NOTES



GARDENIA BRAZIL NP



WATER LILY



TUBEROSE

BOTTOM NOTES



FIG



AMBER



PEACH SKIN

Contains
Essential Oils:

- Lemon
- Grapefruit
- Ylang ylang

Contains Firmenich
Deep Roots Essential
Oils:

- Benjoin Sumatra

White Tea

Serene country hills. A refreshing infusion of white tea, jasmine, and wild rose brightened by citrus and aromatic thyme. An elegant embrace.



aera™

“Silver Needle white tea leaves are among the most prized by connoisseurs. Harvesters delicately pick only the fresh extremities of the plant. When steeped, they blossom into an incomparable aroma. For this fragrance, I added a touch of white freesia for additional brightness and a hint of sustainable copaiba balsam wood for extra comfort.”

Master Perfumer
Christophe Laudamiel

Moods	Mellow, Familiar
Collection	Core
Olfactive Family	Floral Fresh
Detection Level	4
Odor Neutralizing	DeodEclyx R
SKU	7095

White Tea

TOP NOTES



BERGAMOT



LEMON



OZONE

MIDDLE NOTES



MUGUET



JASMINE



THYME

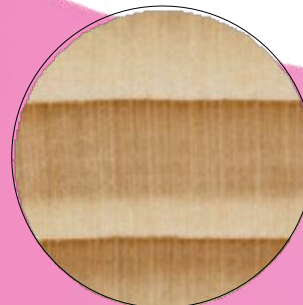
BOTTOM NOTES



TEA ACCORD



TONKA BEAN



BALSAM WOOD



Contains
Essential Oils:

- Sweet Orange

Contains Firmenich
Deep Roots Essential
Oils:

- Copaiba

Zephyr

The fresh scent of blue sky and warm sun. And a light breeze of sandalwood, lotus petals, and lilies from the valley floor.



aera™



SECAIRDESIGN

“I wanted to create a fragrance that would capture the feelings of zen and serenity. Simple and minimal, clean notes of bergamot, mandarin, and lemon float on a fountain of lotus petals and geranium. A touch of transparent cedarwood and pine round out the blend.”

Gil Clavien

Principal Perfumer

Moods | Refreshing, Escape

Collection | Core

Olfactive Family | Airy Floral (Ozonic)

Detection Level | 3.4

Odor Neutralizing | DeodEclyx R

SKU | AF01010116006

Zephyr

Contains Essential Oils:

- Bergamot
- Sweet Orange
- Lemon
- Geranium
- Mandarin
- Cedarwood
- Pinacea
- Palmarosa
- Pine
- Clove Bud

Contains Firmenich
Deep Roots Essential
Oils:

- Cedarwood Virginia
- Italian Bergamot
- Geranium
- Siberian Pine
- Australian Sandalwood
- Egyptian Violet Leaf

TOP NOTES



BERGAMOT



GINGER



PINK GRAPEFRUIT

MIDDLE NOTES



LOTUS



LILY OF THE VALLEY



FREESIA



BOTTOM NOTES



PAMPLEWOOD



SANTAL



WARM WOOD



MILKY



AMBROX

Wellbeing MoodBoost

Inspired scents for any mood, and every space

Sun's Out



aera™



SECAIRDESIGN

Tangerine and orange bring sunshine to the room. Smiles for miles. Juicy, sparkling orange and tangerine essential oils are like a giant dose of Vitamin Happy. Prepare for an immediate improvement in your mood. It's going to be a bright, sun-drenched day.

Moods | Happy, Refreshed

Scent Type | Citrus

Essential oils | Sweet Orange, Lemon,
Lemongrass, Mandarin, Pine,
Orange Flower

Strength Level | Subtle

Sun's Out

TOP NOTES



MANDARIN



SWEET ORANGE

MIDDLE NOTES



LEMON GRASS

GREEN TEA

Contains Essential Oils:

- Mandarin
- Sweet Orange
- Lemon Grass

Soft Pants



aera™



Sandalwood, Vanilla and Eucalyptus will make you relax!

That feeling when you slip out of tight jeans into velvety joggers to just relax – that's exactly what "Soft Pants" does to your nose. Chill-out scent for lazy days!

The MoodBoost™ Accord Soft Pants have been shown to be associated with soothing and well-being feelings by consumers with high certainty.

Moods		Calm, Cozy
Scent Type		Aromatic
Essential oils		Eucalyptus Leaf, Vanilla, Sandelwood
Strength Level		Between Subtle and Strong

Soft Pants

TOP NOTES



VANILLA



SANDALWOOD



GREEN



SAPPLE

Contains Essential Oils:

- (Vanilla Planifolia Extract - 0.01%-0.05%)
- Sandelwood
- Eucalyptus

MIDDLE NOTES



EUCALYPTUS



LAVENDER



JASMINE

Contains Firmenich Deep Roots Essential Oils:

- Madagascar Vanilla

BOTTOM NOTES



MUSK



MOSS



CEDARWOOD

Spa La La



Refreshes the mind and dispels bad vibes. No more bad thoughts! The invigorating essences of rosemary, mint and sandalwood leave no room for a bad mood. Instead, it frees the mind and brightens the mood. The MoodBoost™ Accord Spa La La has been shown to be associated with energy and refreshment by consumers with high certainty.

Moods | Energized, Refreshed

Scent Type | Aromatic

Essential oils | Peppermint, Rosemary,
Spearmint, Lemon,
Cedarwood

Strength Level | Subtle

Spa La La

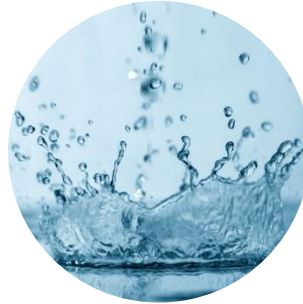
TOP NOTES



COOL MINT



FRESH GREEN



WATERY

MIDDLE NOTES



ROSEMARY



EUCALYPTUS



SOFT MUSK



PINE

Contains Essential Oils*:

- Mint
- Rosemary
- Cedarwood
- Lemon

BOTTOM NOTES



CEDARWOOD

Pillow Plans



Soothes the senses and accompanies you to dreamland.

Time to relax. The soft scent of lavender blends with the essential oils of sage to create a reassuring calm mood that slowly says goodbye to your head in dreamland... Heavenly!

Moods		Calm, Relaxed
Scent Type		Aromatic
Essential oils		Lavandin, Eucalyptus, Lavender, Cinnamon, Clary Sage, Clove Buds, Sweet Orange, Pine, Vanilla
Strength Level		Strong

Pillow Plans

TOP NOTES



CLARY SAGE



LAVENDER



LAVANDIN

MIDDLE NOTES



SWEET ORANGE



EUCALYPTUS



CINNAMON

BOTTOM NOTES



VANILLA

Contains Essential Oils:

- Clary Sage
- Lavender
- Sweet Orange
- Lavandin
- Eucalyptus
- Vanilla
- Cinnamon
- Pine

Aromatherapy

Award-winning essential oil blends that will soothe your soul, and open your mind – brought to you by Aromatherapy Associates London

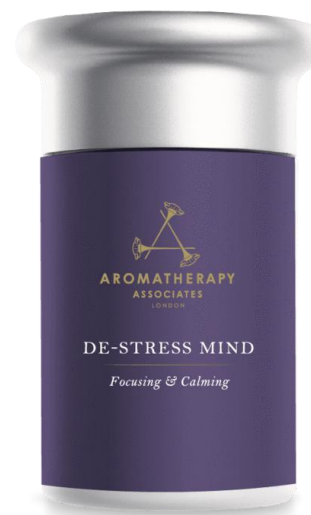
De-Stress

Create a peaceful place where you can be truly present to work, relax or play.



acera™

 **SECAIRDESIGN**



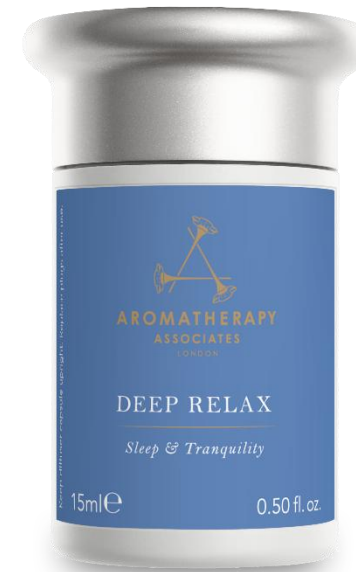
Contains Essential Oils:

- Frankincense (focusing)
- Petitgrain (relaxing)
- Wild Chamomile (soothing)

Moods		Calm, Focus
Collection		Aromatherapy
Olfactive Family		Aromatic Woody
Detection Level		3.4
Odor Neutralizing		No
SKU		9228

Deep Relax

A vital part of the night-time ritual for those who struggle with sleep, have an overactive mind or suffer with night-time anxiety.



Contains Essential Oils:

- Chamomile (Soothing)
- Vetiver (grounding)
- Sandalwood (Comforting)

Moods | Sleep, Tranquility

Collection | Aromatherapy

Olfactive Family | Aromatic Woody

Detection Level | 4.2

Odor Neutralizing | No

SKU | F9268

Forest Therapy

Create an emotionally healing space with this nature-focused blend inspired by the Japanese art of Forest Bathing.



Contains Essential Oils:

- Pink Pepper (nurturing)
- Cypress (calming)
- Ho Wood (cleansing)

Moods		Ground, Support
Collection		Aromatherapy
Olfactive Family		Woody Aromatic
Detection Level		3.2
Odor Neutralizing		No
SKU		9267

Revive Morning

A powerful revitalizing lift to your environment that brings on the positive vibes, brightens spaces and gets the energy flowing!



Contains Essential Oils:

- Juniper Berry (invigorating)
- Rosemary (stimulating)
- Pink Grapefruit (enlivening)

Moods | Energize, Awaken

Collection | Aromatherapy

Olfactive Family | Aromatic Citrus

Detection Level | 4

Odor Neutralizing | No

SKU | 9229

Support Breathe

Invigorate a space into a place of empowerment with this complex blend of head-clearing aromas.



aera™

 **SECAIRDESIGN**



Contains Essential Oils:

- Eucalyptus (aids breathing)
- Tea Tree (anti-bacterial)
- Pine (antiseptic)

Moods		Support, Uplift
Collection		Aromatherapy
Olfactive Family		Aromatic Woody
Detection Level		3.2
Odor Neutralizing		No
SKU		9227

Bliss

 **SECAIRDESIGN**



Rest and unwind!

Disconnect and dissolve into feelings of calm and renewal.

Moods | Calm

Scent Type | Aromatic

Essential oils | Marjoram, Ylang-Ylang and Valerian Essential Oils

Strength Level | Strong

aera™

Bliss

TOP NOTES



VALERIAN



YLANG YLANG



MARJORAM

MIDDLE NOTES

BOTTOM NOTES

Contains Essential Oils:

- Valerian
- Ylang Ylang
- Marjoram

Optimism



Brighten & Boost

Promote positivity & uplift the senses, leaving you feeling comforted, lighter & brighter.

Moods | Happy, Refreshed

Scent Type | Aromatic

Essential oils | Blend of Bergamot, Damask Rose & Basil Essential Oils

Strength Level | Subtle

aera™

Optimism

TOP NOTES



BASIL



ROSE



BERGAMOT

Contains Essential Oils:

- Bergamot
- Basil
- Rose

MIDDLE NOTES

BOTTOM NOTES

Hygiene

Bring brightness and comfort to any space with
fresh clean fragrances

Citrus and Sage

The fresh zest of ripe Italian lemons and Persian limes harmoniously blend with cooling clary sage and a touch of verbena to energize your home with sparkling freshness.



aera™

 **SECAIRDESIGN**

“The Aera diffuser is rare in its ability to capture and respect the fresh zest of ripe citrus fruit. In this scent, real Italian and Florida lemons join Persian limes to dance in harmony with elegant sage and a touch of verbena. A shot of good mood if you wish”

Master Perfumer

Christophe Laudamiel

Moods | Cheerful, Invigorating

Collection | Hygiene +

Olfactive Family | Citrus Lemon Floral

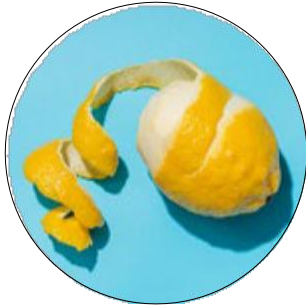
Detection Level | 4.0

Odor Neutralizing | DeodEclyx R

SKU | 7101

Citrus and Sage

TOP NOTES



LEMON ZEST



LIME

MIDDLE NOTES



GERANIUM



VERBENA

BOTTOM NOTES



CEDAR



CLARY SAGE

Contains Essential Oils:

- Geranium
- Clary Sage
- Lime
- Cedarwood Virginia
- Lemon

Contains Firmenich
Deep Roots Essential
Oils:

- Cedarwood Virginia
- Citronella Ceylon
- Geranium Egypt
- Clary Sage Pays

Lavender and Bergamot



A peaceful lavender field soothes the soul. Hints of bright mandarin and bergamot complete the refreshing yet serene feeling.



“We all carry powerful memories associated with lavender, which is why this scent seems to caress and reassure us all so deeply. Alongside this softness, a lavender sachet that you can almost sense crunching beneath your fingers.”

Master Perfumer
Christophe Laudamiel

Moods | Peaceful, Refreshing

Collection | Hygiene +

Olfactive Family | Fresh Aromatic

Detection Level | 3

Odor Neutralizing | DeodEclx R

SKU | 7001

aera™

Lavender and Bergamot

TOP NOTES



CITRUS



BERGAMOT



MINTY

MIDDLE NOTES



LAVENDER



LAVANDIN

BOTTOM NOTES



WOODS



COUMARIN



Contains Essential Oils:

- Penny Royal
- Clove Bud
- Mentha Arvensis
- Eucalyptus

Contains Firmenich Deep Roots Essential Oils:

- Lavandin
- Lavender
- Patchouli
- Clary Sage Pays

Linen and Lemon

A breath of fresh air full of positive vibes. Clean laundry and citrus notes of lemon and sweet orange are softened with watery notes and lily of the valley.



aera™



“I mixed in bright sunshine and sweet spring grasses to truly capture the feeling of hanging your laundry outside to dry.”

Sabine de Tscharnier
Perfumer

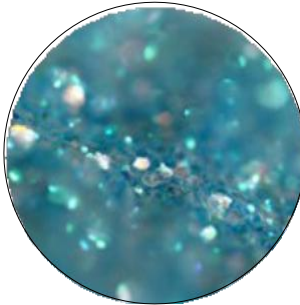
Moods		Happy, Energizing
Collection		Hygiene +
Olfactive Family		Floral Aldehydic Citrus
Detection Level		4
Odor Neutralizing		No
SKU		AF01010319002

Linen and Lemon

TOP NOTES



ORANGE



ALDEHYDES



LEMON

MIDDLE NOTES



LOTUS FLOWER



GREEN LEAVES



SAGE

BOTTOM NOTES



CEDARWOOD



GUAIAC WOOD



BLONDE WOODS



Contains Naturals
Together Essential Oils:

- Cedarwood
- Elemi

Contains Essential Oils:

- Orange
- Lime
- Pine
- Lemon
- Guaiacwood

Contains Firmenich
Deep Roots Essential
Oils:

- Cedarwood
- Elemi

Mint and Eucalyptus



SECAIRDESIGN

The flourish of a summer herb garden lifts spirits. Fresh mint garnishes bright citrus fruits while eucalyptus exhales of freshness and cleanliness.



“This fragrance captures the new, fresh feeling I have when I am in my garden. The aromatic herbs and crunchy green leaves are balanced out by the lively, youthful florals that are starting to bloom.”

Hien Tang - Perfumer

Moods		Uplifting, Soothing
Collection		Hygiene +
Olfactive Family		Aromatic Citrus Woody Musky Spicy
Detection Level		3.6
Odor Neutralizing		DeodEclyx R, DeodAcil
SKU		9269

aera™

Mint and Eucalyptus

TOP NOTES



GARDEN MINT



EUCALYPTUS



CITRUS

MIDDLE NOTES



JASMINE



LEMONGRASS



SPICE

BOTTOM NOTES



PATCHOULI



MUSK



Contains Essential Oils:

- Eucalyptus
- Orange
- Spearmint

Geranium



Geranium blooms fill the garden air with the fresh scent of soft pink petals and delicate leaves. Breathe in and feel nature's happiness all around you.

Moods | Happy, Refreshed

Scent Type | Floral

Essential oils | Geranium, Palmarosa & Clove
Essential Oils

Strength Level | Strong

aera™

Geranium

TOP NOTES



GERANIUM



CLOVES



PALMAROSA

MIDDLE NOTES

BOTTOM NOTES

Contains Essential Oils:

- Geranium
- Cloves
- Palmarosa



Anti-Odor

Say goodbye to unpleasant odors, and say hello to freshness

aera™

Kitchen

Return the kitchen to rights with this crisp, aromatic garden scent designed to freshen and remove residual cooking smells.

*Formerly known as GOOD Riddance Kitchen Odor.



aera™

Moods	Refreshing, Energizing
Collection	Anti-Odor
Scent Type	Aromatic
Detection Level	3.4
Odor Neutralizing	DeodEclyx R, DeodAcil
Essential oils	Garden Mint, Citrus & Eucalyptus

Kitchen

TOP NOTES



FRESH CITRUS



MINT



EUCALYPTUS

MIDDLE NOTES

BOTTOM NOTES

Contains Essential Oils:

- Eucalyptus
- Peppermint
- Sweet Orange



aera™

Musty

When mold and mildew take to the air, send in this bright, crisp scent to take aim on mustiness and let the sunshine in.



aera™

Moods	Refreshing, Outdoorsy
Collection	Anti-Odor
Olfactive Family	Floral Fruity
Detection Level	3.4
Odor Neutralizing	DeodEclyx R, DeodAcil
SKU	7148

Musty

TOP NOTES

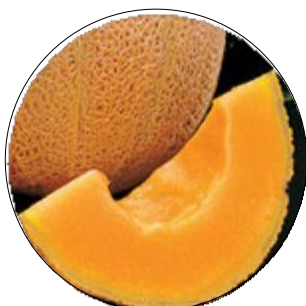


FRESH CITRUS



MINT

MIDDLE NOTES



MELON



MUGUET

BOTTOM NOTES



BAY LEAF



BALSAM



Contains Essential Oils:

- Lemon
- Clove Bud
- Lavandin Grosso
- Pine
- Peppermint
- Sweet Orange

Contains Firmenich
Deep Roots Essential
Oils:

- Copaiba
- Elemi
- Lavender Pays
- Lavandin Grosso

aera™

Pet

Knock out odors from pets and let the cool breeze in with this fresh, outdoorsy scent. It's like living with the windows open all year-round.



aera™

Moods		Refreshing, Outdoorsy
Collection		Anti-Odor
Olfactive Family		Woody Green Cedarwood
Detection Level		2.1
Odor Neutralizing		DeodAcil
SKU		9276

Pet

TOP NOTES



JUNIPER

MIDDLE NOTES



GREEN LEAVES



JASMINE

BOTTOM NOTES



CEDARWOOD



PATCHOULI



Contains Essential Oils:

- Pine Extract

Contains Firmenich
Deep Roots Essential
Oils:

- Cedarwood Virginia
- Patchouli

aera™

Smoke

Lingering smoke odors in your home? This clean scent will refresh the atmosphere leaving the smell of a fresh start.



aera™

Moods	Refreshing, Familiar
Collection	Anti-Odor
Olfactive Family	Soft Floral
Detection Level	3.4
Odor Neutralizing	DeodEclyx R, DeodAcil
SKU	7020

Smoke

TOP NOTES



GRAPEFRUIT



FRESH AIR ACCORD

MIDDLE NOTES



RHUBARB



MELON

BOTTOM NOTES



BLONDE WOODS



Contains Essential Oils:

- Sweet Orange
- Eucalyptus Globulus

aera™